

Keystone Exams: Algebra I, Biology, and Literature Performance Level Descriptors And Cut Scores

July 2011

STATE BOARD REVIEW

Topic

- Keystone Algebra I, Biology and Literature
 - Performance Level Descriptors (PLDs)
 - Cut scores

Task

- Review PLDs
- Review cut score recommendations

Action – (July 20, 2011)

- Adopt PLDs
- Adopt Cut Scores

PERFORMANCE-LEVEL DESCRIPTORS

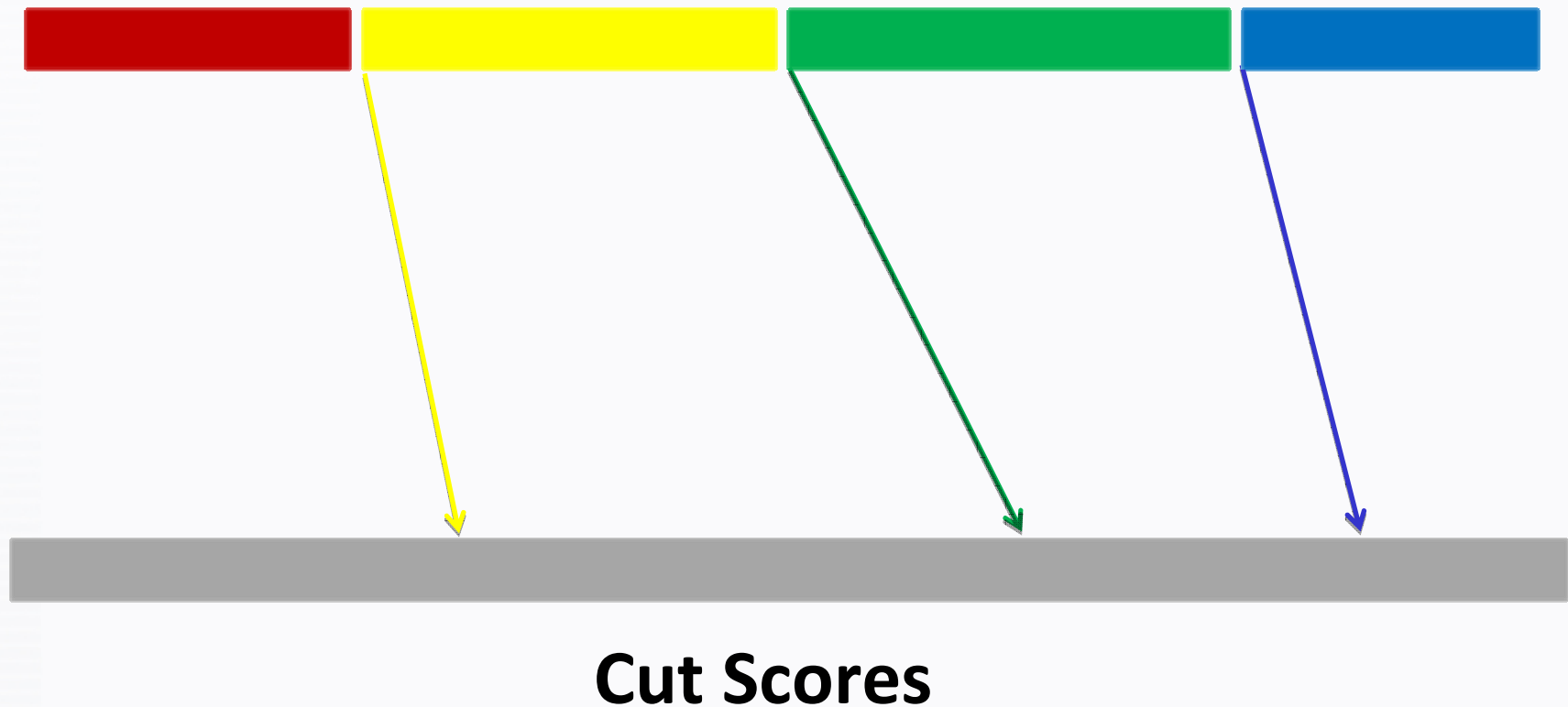
- Statements that describe the knowledge and skills expected at different performance levels with respect to the Pennsylvania Academic Content Standards as defined by the Assessment Anchors and Eligible Content
 - Provide guidelines to assess the level of student performance
 - Provide an indication of how demanding the standards should be
 - Provide a progression for how the standards should be implemented

SCALED SCORE CUTS AND IMPACT

Content Area	BELOW BASIC	BASIC	PROFICIENT	ADVANCED
Algebra I	1200-1438 19.8%	1439-1499 41.2%	1500-1545 27.5%	1546- 1800 11.5%
Biology	1200-1459 31.4%	1460-1499 32.7%	1500-1548 26.6%	1549-1800 9.3%
Literature	1200-1443 18.3%	1444-1499 31.4%	1500-1583 43.6%	1584-1800 6.7%

STANDARD SETTING

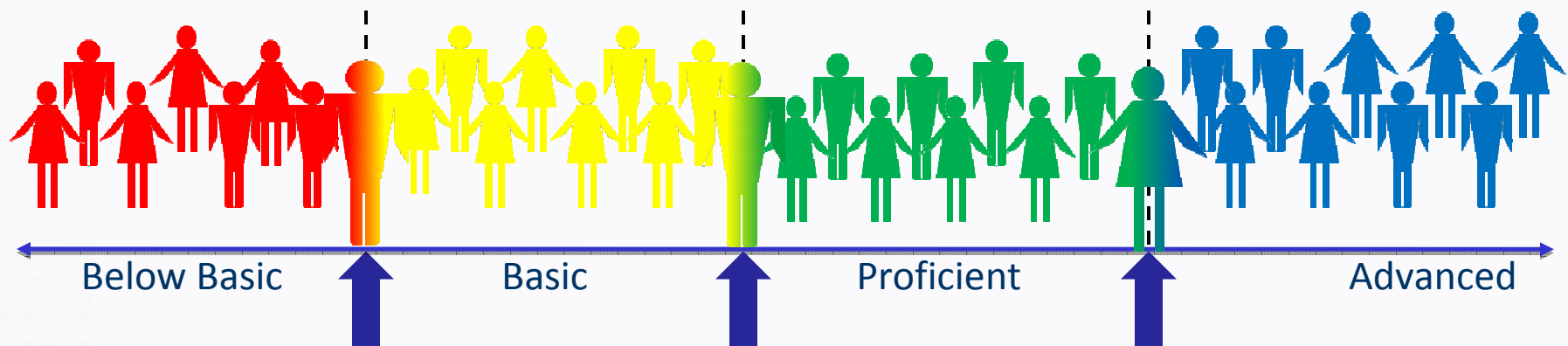
Performance Standards (i.e., PLDs)



METHODOLOGY

Bookmark Procedure

- Reviewed by National Technical Advisory Committee
- Focuses on Items
- Utilizes concept of “***Borderline Student***”

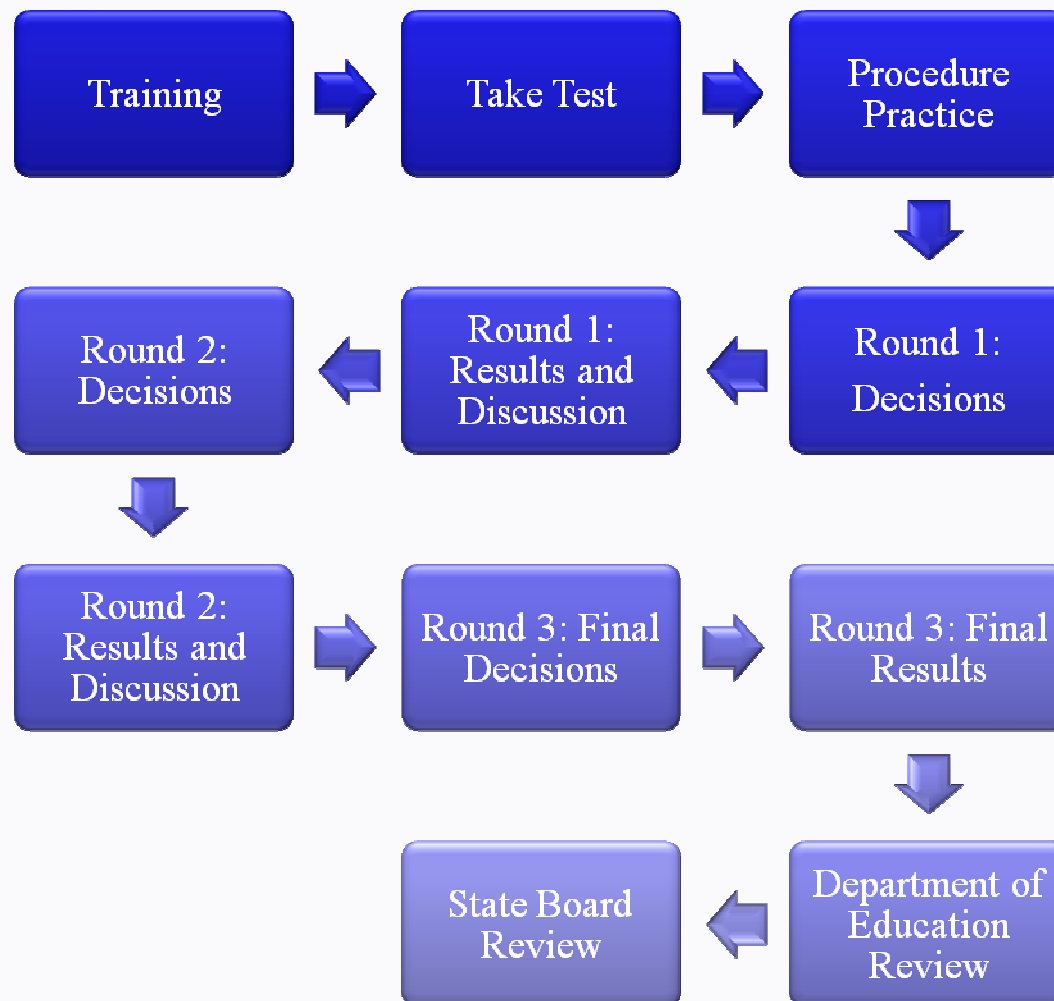


PANELISTS

General, Special, and Higher Education Representatives:

- Range of teaching experience
- Knowledge and expertise of the algebra I, biology, and/or literature content area
- Diverse demographics
- Higher education experience

PROCESS



RECOMMENDATIONS

Adopt Performance Level Descriptors

Keystones Algebra I, Biology, and Literature

Adopt Cut Scores

Keystones Algebra I, Biology, and Literature

SCALED SCORE CUTS FOR APPROVAL

Content Area	BELOW BASIC	BASIC	PROFICIENT	ADVANCED
Algebra I	1200–1438	1439–1499	1500–1545	1546–1800
Biology	1200–1459	1460–1499	1500–1548	1549–1800
Literature	1200–1443	1444–1499	1500–1583	1584–1800